

Chapter 1 - continued

Computer Technology And Performance

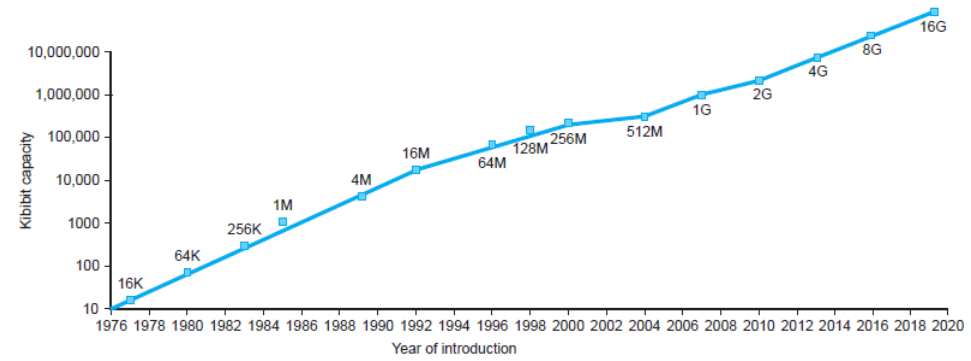
Abstractions

The BIG Picture

- Abstraction helps us deal with complexity
 - Hide lower-level detail
- Instruction set architecture (ISA)
 - The hardware/software interface
- Application binary interface
 - The ISA plus system software interface
- Implementation
 - The details underlying and interface

Technology Trends

- Electronics technology continues to evolve
 - Increased capacity and performance
 - Reduced cost



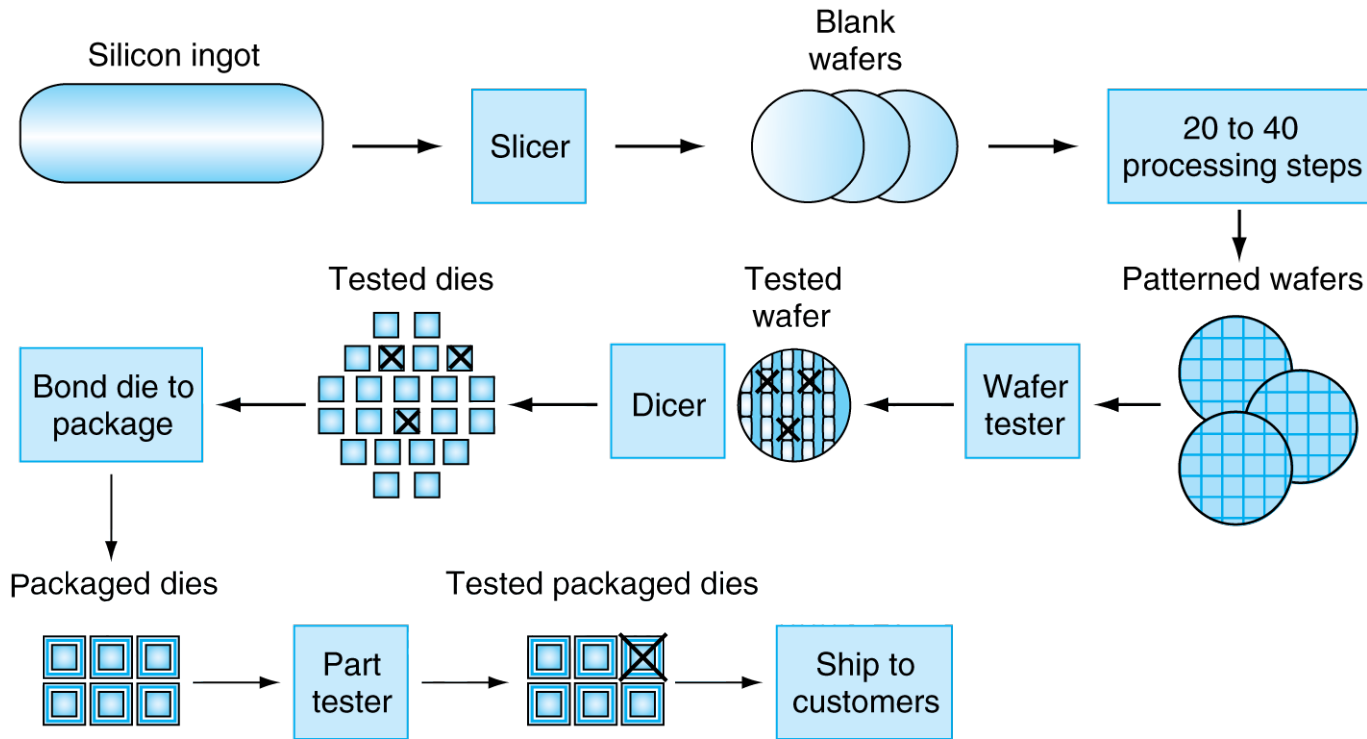
DRAM capacity

Year	Technology	Relative performance/cost
1951	Vacuum tube	1
1965	Transistor	35
1975	Integrated circuit (IC)	900
1995	Very large scale IC (VLSI)	2,400,000
2013	Ultra large scale IC	250,000,000,000

Semiconductor Technology

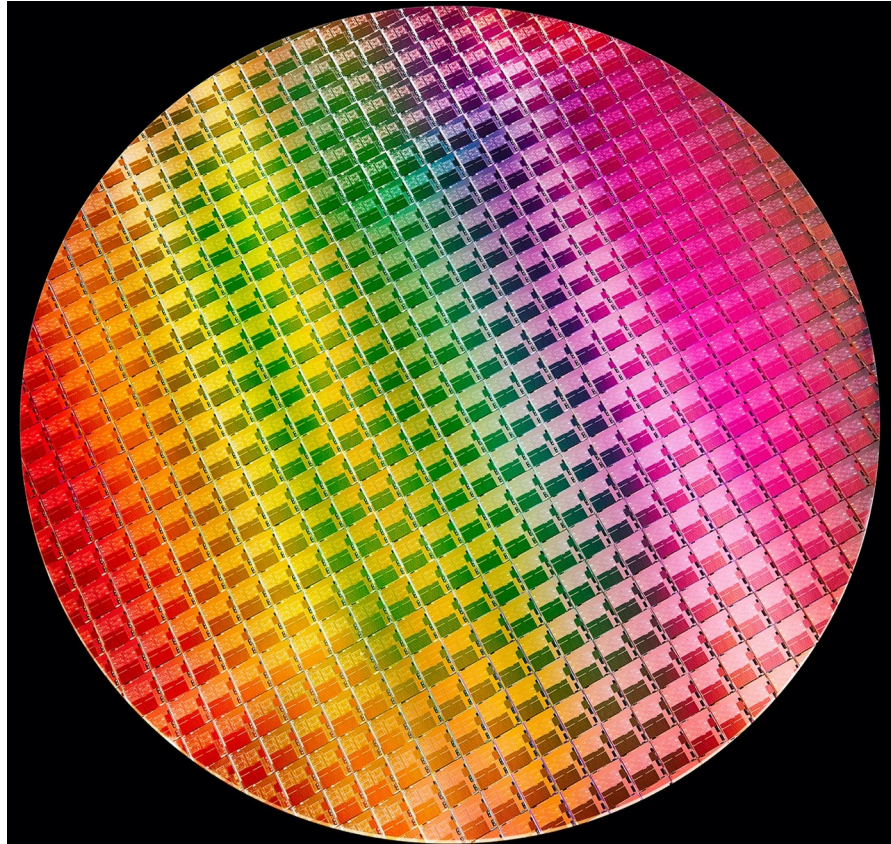
- Silicon: semiconductor
- Add materials to transform properties:
 - Conductors
 - Insulators
 - Switch

Manufacturing ICs



- **Yield: proportion of working dies per wafer**

Intel® Core 10th Gen



- 300mm wafer, 506 chips, 10nm technology
- Each chip is 11.4 x 10.7 mm

Integrated Circuit Cost

$$\text{Cost per die} = \frac{\text{Cost per wafer}}{\text{Dies per wafer} \times \text{Yield}}$$

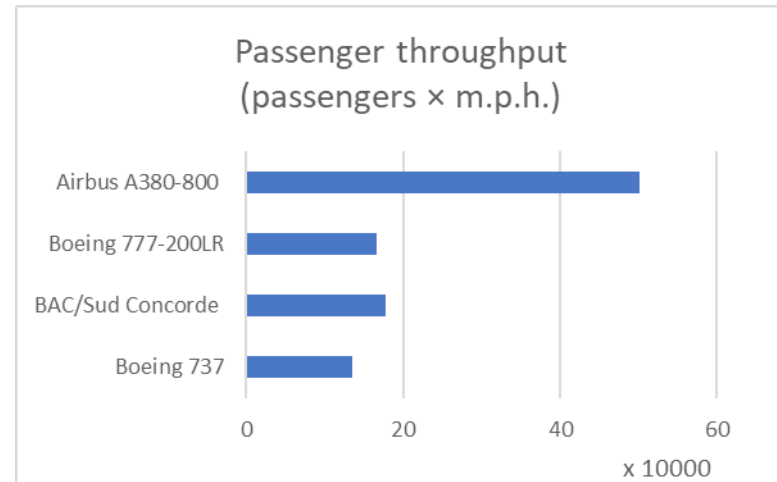
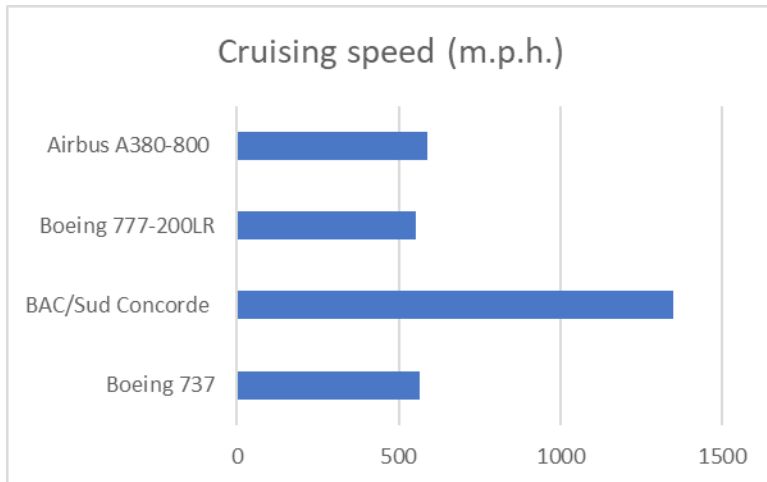
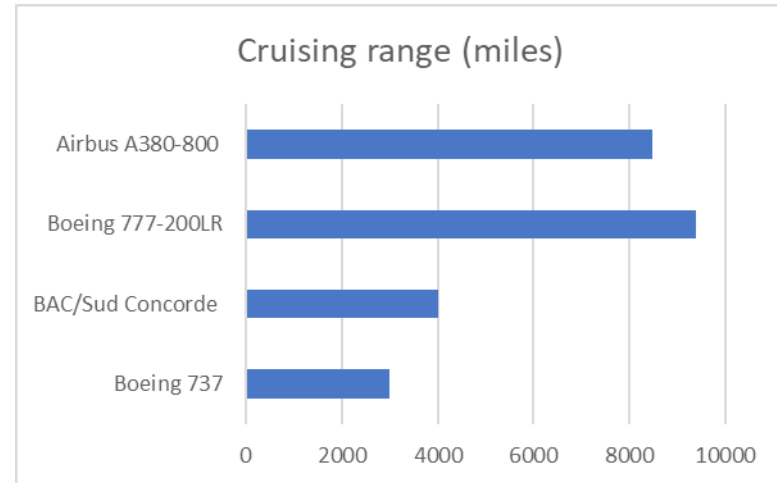
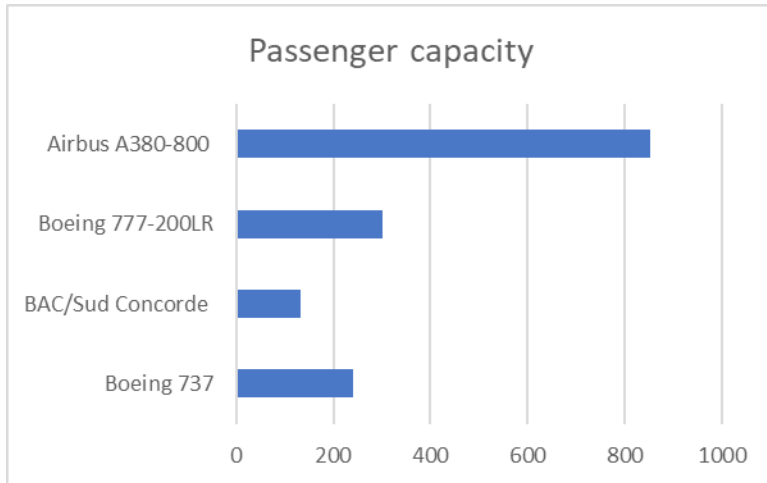
$$\text{Dies per wafer} \approx \text{Wafer area} / \text{Die area}$$

$$\text{Yield} = \frac{1}{(1 + (\text{Defects per area} \times \text{Die area}/2))^2}$$

- Nonlinear relation to area and defect rate
 - Wafer cost and area are fixed
 - Defect rate determined by manufacturing process
 - Die area determined by architecture and circuit design

Defining Performance

- Which airplane has the best performance?



Response Time and Throughput

- Response time
 - How long it takes to do a task
- Throughput
 - Total work done per unit time
 - e.g., tasks/transactions/... per hour
- How are response time and throughput affected by
 - Replacing the processor with a faster version?
 - Adding more processors?
- We'll focus on response time for now...

Relative Performance

- Define Performance = 1/Execution Time
- “X is n time faster than Y”

$$\begin{aligned} & \text{Performance}_X / \text{Performance}_Y \\ &= \text{Execution time}_Y / \text{Execution time}_X = n \end{aligned}$$

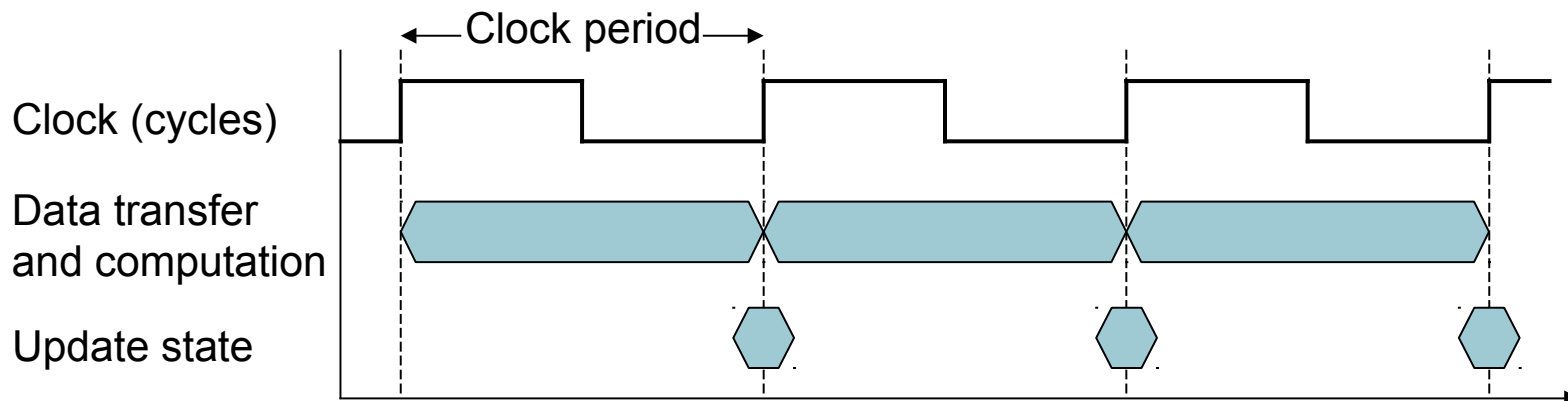
- Example: time taken to run a program
 - 10s on A, 15s on B
 - $\text{Execution Time}_B / \text{Execution Time}_A$
 $= 15\text{s} / 10\text{s} = 1.5$
 - So A is 1.5 times faster than B

Measuring Execution Time

- Elapsed time
 - Total response time, including all aspects
 - Processing, I/O, OS overhead, idle time
 - Determines system performance
- CPU time
 - Time spent processing a given job
 - Discounts I/O time, other jobs' shares
 - Comprises user CPU time and system CPU time
 - Different programs are affected differently by CPU and system performance

CPU Clocking

- Operation of digital hardware governed by a constant-rate clock



- Clock period: duration of a clock cycle
 - e.g., $250\text{ps} = 0.25\text{ns} = 250 \times 10^{-12}\text{s}$
- Clock frequency (rate): cycles per second
 - e.g., $4.0\text{GHz} = 4000\text{MHz} = 4.0 \times 10^9\text{Hz}$

CPU Time

$$\begin{aligned}\text{CPU Time} &= \text{CPU Clock Cycles} \times \text{Clock Cycle Time} \\ &= \frac{\text{CPU Clock Cycles}}{\text{Clock Rate}}\end{aligned}$$

- Performance improved by
 - Reducing number of clock cycles
 - Increasing clock rate
 - Hardware designer must often trade off clock rate against cycle count

CPU Time Example

- Computer A: 2GHz clock, 10s CPU time
- Designing Computer B
 - Aim for 6s CPU time
 - Can do faster clock, but causes $1.2 \times$ clock cycles
- How fast must Computer B clock be?

$$\text{Clock Rate}_B = \frac{\text{Clock Cycles}_B}{\text{CPU Time}_B} = \frac{1.2 \times \text{Clock Cycles}_A}{6\text{s}}$$

$$\begin{aligned}\text{Clock Cycles}_A &= \text{CPU Time}_A \times \text{Clock Rate}_A \\ &= 10\text{s} \times 2\text{GHz} = 20 \times 10^9\end{aligned}$$

$$\text{Clock Rate}_B = \frac{1.2 \times 20 \times 10^9}{6\text{s}} = \frac{24 \times 10^9}{6\text{s}} = 4\text{GHz}$$

Instruction Count and CPI

Clock Cycles = Instruction Count \times Cycles per Instruction

CPU Time = Instruction Count \times CPI \times Clock Cycle Time

$$= \frac{\text{Instruction Count} \times \text{CPI}}{\text{Clock Rate}}$$

- Instruction Count for a program
 - Determined by program, ISA and compiler
- Average cycles per instruction
 - Determined by CPU hardware
 - If different instructions have different CPI
 - Average CPI affected by instruction mix

CPI Example

- Computer A: Cycle Time = 250ps, CPI = 2.0
- Computer B: Cycle Time = 500ps, CPI = 1.2
- Same ISA
- Which is faster, and by how much?

$$\begin{aligned}\text{CPU Time}_A &= \text{Instruction Count} \times \text{CPI}_A \times \text{Cycle Time}_A \\ &= 1 \times 2.0 \times 250\text{ps} = 1 \times 500\text{ps} \leftarrow \text{A is faster...}\end{aligned}$$

$$\begin{aligned}\text{CPU Time}_B &= \text{Instruction Count} \times \text{CPI}_B \times \text{Cycle Time}_B \\ &= 1 \times 1.2 \times 500\text{ps} = 1 \times 600\text{ps}\end{aligned}$$

$$\frac{\text{CPU Time}_B}{\text{CPU Time}_A} = \frac{1 \times 600\text{ps}}{1 \times 500\text{ps}} = 1.2 \leftarrow \text{...by this much}$$

CPI in More Detail

- If different instruction classes take different numbers of cycles

$$\text{Clock Cycles} = \sum_{i=1}^n (\text{CPI}_i \times \text{Instruction Count}_i)$$

- Weighted average CPI

$$\text{CPI} = \frac{\text{Clock Cycles}}{\text{Instruction Count}} = \sum_{i=1}^n \left[\text{CPI}_i \times \frac{\text{Instruction Count}_i}{\text{Instruction Count}} \right]$$

Relative frequency

CPI Example

- Alternative compiled code sequences using instructions in classes A, B, C

Class	A	B	C
CPI for class	1	2	3
IC in sequence 1	2	1	2
IC in sequence 2	4	1	1

- Sequence 1: IC = 5
 - Clock Cycles
 $= 2 \times 1 + 1 \times 2 + 2 \times 3$
 $= 10$
 - Avg. CPI = $10/5 = 2.0$
- Sequence 2: IC = 6
 - Clock Cycles
 $= 4 \times 1 + 1 \times 2 + 1 \times 3$
 $= 9$
 - Avg. CPI = $9/6 = 1.5$

Performance Summary

The BIG Picture

$$\text{CPU Time} = \frac{\text{Instructions}}{\text{Program}} \times \frac{\text{Clock cycles}}{\text{Instruction}} \times \frac{\text{Seconds}}{\text{Clock cycle}}$$

- Performance depends on
 - Algorithm: affects IC, possibly CPI
 - Programming language: affects IC, CPI
 - Compiler: affects IC, CPI
 - Instruction set architecture: affects IC, CPI, T_c